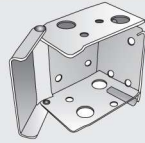


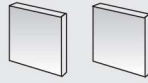
Wooden Blinds Fitting Instructions

You should have:

First check you've got all the fittings that come with your Wooden Venetian blind.



End brackets: x 1 pair



Matching end returns: x 1 pair
(if blind is to be fitted outside the window recess)



Matching fascia: x 1



Centre support bracket : x 1
(if length requires)



Safety cleat: x 1

Standard fixings for the most common installations supplied

Getting started

YOU WILL NEED:

- A drill with correct bit
 - A crossheaded screwdriver
 - A metal tape measure
 - A pencil
- Your brackets are packed separately in the box. Please ensure you've located them before disposing of the packaging.
 - The brackets are a universal type that can be used to top fix the blind into a recess or face fix into a frame or a wall.
 - A centre support bracket is also supplied with larger blinds that can also be top fixed or face fixed. This should be located as close to the centre of the blinds as possible, avoiding any slat support ladders.
 - Please read the following instructions carefully before you start fitting your blind.

1

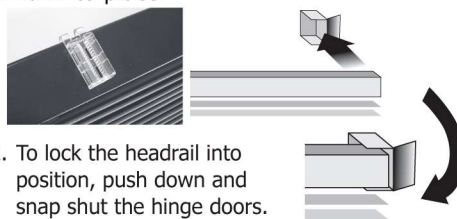
To fix the brackets

1. Locate the measuring points you used to calculate the width of the blind. You may be able to use the blind as a template.
2. Ensure the brackets are positioned a suitable distance away from any window handles or obstructions to allow the blind to operate smoothly.
3. Make sure you allow the correct amount of space for the blind to fit snugly between the brackets.
4. Hold a bracket in position and mark where the screws will go, using the relevant holes in the bracket as a guide.
5. If you're fitting to a wall or lintel, use a drill with the suitable sized bit to make your holes, and push in rawlplugs.
6. If you're fitting into a wooden frame, screws your brackets into position. You may want to make pilot holes to allow easier fixing of the screws.
7. Fix the bracket into place and repeat on the other side of the blind.

2

To fit the blind

1. Attach the valance hooks to the front edge of the head rail at equal distance apart along the length of the rail. Open the doors on the brackets and slide the blind in to place.



2. To lock the headrail into position, push down and snap shut the hinge doors.

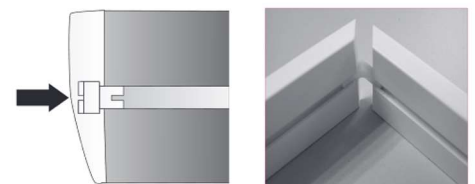
3. Fit the safety cleat to a wall adjacent to the blind. This safety device must be fitted in line with child safety legislation. For specific guidance on this please refer to your Fitting and Using Child Safety Devices leaflet.

3 To fix the valance

1. Fit the valance clips into the groove on the back of the valance at equal distance apart along its length.



2. Line up the valance clips with the hooks on the blind. You can easily slide the hooks on the head rail to match the position of the hooks.
3. Push the valance into place.
4. To fit the valance returns to the sides of the valance (if required) slide the corner clips into position in the groove on the back of the valance.
5. Push the valance returns onto the clip.



Operating your blind:

Operating your blind is easy. Just follow these instructions.

- There are two controls that will operate the blind; a tilt control and a raise lower control.
- To raise the blind, pull the cord down until the blind is at the height you want and lock into place by moving the cords across the blind.
- To lower the blind, release the cord by moving them away from the blind, then let the cord slide through your fingers.
- Slats should be open when raising or lowering the blind.
- To adjust the angle of the slats, operate the tilt control cords as required.

Safety tips:

There are things that you can do to reduce risk in your home.

- Move beds, cots and furniture away from the window.
- Do not let cords or chains hang loose. Make sure they are kept out of reach of children at all times.
- Do not tie loose cords and chains together.
- Check the condition of all safety devices if not used regularly and replace if the device is faulty.
- Replacements can be ordered on www.makeitchildsafe.co.uk